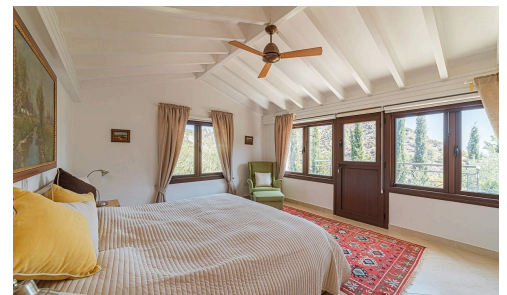
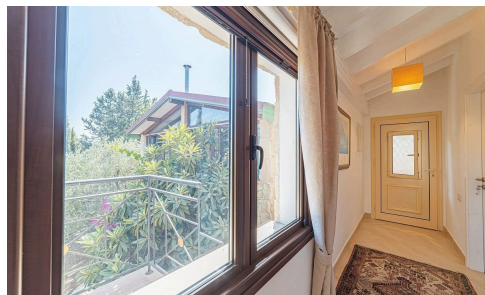


#1475



2 bedroom detached house on a 14,382 sqm plot €900,000

 Parekkklisia, Limassol

Just on the outskirts of Limassol a traditional detached three-bedroom farmhouse with recently refurbished interiors on a 14.382 sqm land The house is surrounded by 14,382 sqm of fruit gardens. The property is of outstanding natural beauty, and the coast is just minutes away

Location / Size: In the hilly area conveniently located adjacent to Government Land (Green Area - which does not allow any development) with distant sea and unobstructed mountain views. A narrow but asphalted road leads to the gated entrance of the land. The land has a size of 14.382 sqm as per existing title deed and is completely fenced. An internal road covered partially with granite cobble stone allows access for motorized transport. A comfortable

Bedrooms

 2